

AT A GLANCE

Ticks Bite and We Fight!



Our State News

By Sherry Sievewright, Board President

Well, I hope everyone enjoyed summer. It sure came late and left early. Short but sweet.

The Wisconsin Lyme Network board met this week, and we have some exciting things to share in future newsletters. As the number of followers grows on our website, newsletters and on our Facebook page, we continue to also grow our aspirations of how we can better educate and bring awareness to our fellow Wisconsin residents.

We hope that you will come alongside us and continue to support the WLN in either volunteering, making donations, using Amazon Smiles when making purchases and through spreading the word that we are here; we are working hard; and we want to keep spreading as much information as we can about Lyme disease and vector borne illnesses.

We may be small, yet we are mighty. Thank you for all of your support and your commitment to sharing prevention, research and treatment options for patients who have no where else to go.

-Sherry
WLN, Board President

IN THIS ISSUE

OUR STATE NEWS

RESEARCH AND VECTOR BORNE ILLNESSES

WE HAVE PRETREATED SOCKS

UPCOMING EVENTS





Disulfiram - The Latest Treatment Sought

by Sherry Sievewright

There is a great deal of conversation going on in the Lyme community regarding the use of Disulfiram, otherwise known as Antabuse. A common drug used for alcoholics for over 70 years. There are currently clinical trials taking place, and there has been some research done using this drug on patients. The reason for writing about this particular treatment is NOT to persuade anyone to use it NOR to make it look like a cure has been found. The reason for writing this in our newsletter is to make people aware that this particular drug is being tested in clinical trials, it has been used successfully by some Lyme Literate MD's (LLMD) and is the latest discussion on Lyme blogs and Facebook posts.

That being said, while I do not recommend anyone take this drug, I am suggesting that if you are at all considering it, that you **make sure** you are completely educated on what it does, how it helps, what it interacts with, what the side affects are or can be and what you need to do to while on this drug. **Do NOT just go into this blindly without being educated.**

A few things to keep in mind:

- a). A limited diet is expected with this drug. Absolutely zero alcohol! You will have to read every label and make sure you are not eating or drinking anything with alcohol, vinegar or anything fermented. Yes, this also mean Kombucha. Do your homework and understand the reasons why.
- b). Your doctor should be testing your liver functions every couple of weeks. So make sure you have a LLMD that is willing to keep a close watch on you.
- c). There have been cases of increased neuropathy, pain, psychosis (various degrees) including brain fog, etc. Please review ALL side affects.

Please, please, please do your research before starting any Lyme protocol. Is the research firmly substantiated? Is there someone receiving profit off of the usage of the protocol other than helping a patient to heal? Does the healthcare provider know enough to monitor your well being? Please keep all of these things in mind when you are considering *any* new protocol. (By new, I mean anything within the last 10-12 years. Lyme has been around and been treated for over 30 years.)

Some Groups and Blogs to Follow for Information on Lyme Treatments, Research and Protocols

Websites/Blogs:

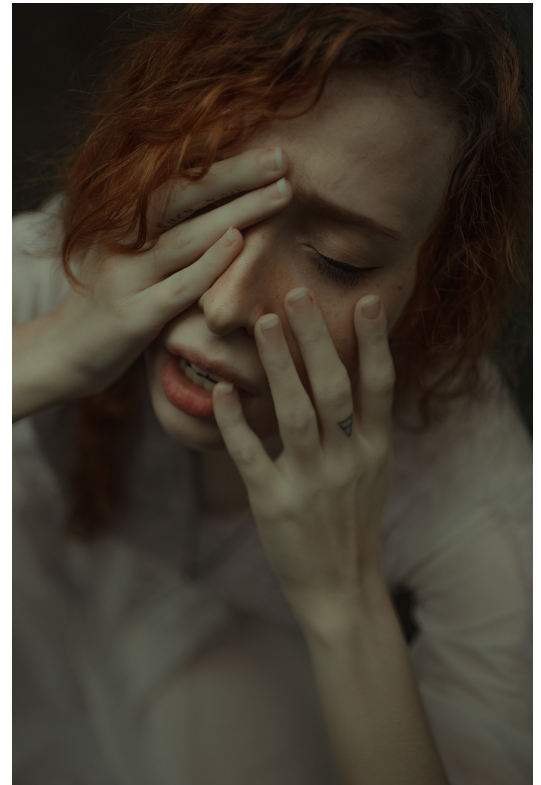
WisconsinLymeNetwork.org
 LymeDiseaseAssociation.org
 ILADS.org
 BayAreaLyme.org
 danielcameronmd.com
 globallymealliance.org
 lymedisease.org

Facebook Groups/People:

Wisconsin Lyme Network
 Mast Cell & Tick Borne Disease Awareness
 Disulfiram For Lyme
 Disulfiram for Lyme Support Group
 NatCap Lyme
 Madison Area Lyme Support Group



Excerpt from his post: "Lyme disease serology tests look for the patient's antibodies against the Lyme bacteria *Borrelia burgdorferi*. This is an indirect test that is plagued with problems."



Are your loved ones ready for hunting season? Do they have what they need to protect themselves against the changing weather? How about a preventative measure against those pesky ticks?

The WLN has socks for not just the hunter, but also for those wonderful fall hikes in the woods for men, women and children alike. Permethrin bonded, lasts for over 70 washes.

For more information, head on over to our website store and take a look. Top right corner of the front page in green where it says "Store" or follow the link ***here***.

<https://www.wisconsinlymenetwork.org>

Be a hero

Support the fight
against life-threatening
illness by shopping at
smile.amazon.com

Shop now ▶

You shop. Amazon donates.

amazonsmile



Privacy

Help support Wisconsin Lyme Network
while you shop:
smile.amazon.com/ch/45-2939996

UPCOMING EVENTS

STAY TUNED FOR NEW
ANNOUNCEMENTS HERE

EXCITING EVENT IN THE
PLANNING. SHARING SOON!!

WE WILL KEEP YOU INFORMED AS
DETAILS BECOME AVAILABLE FOR
UPCOMING EVENTS.

What's Happening In The Lyme Community

Currently in WI...

The up and coming Lyme clinic is OPENING!

Please Note: This is a soft opening with a few patients at this time. When they are open to take on a great patient load, we will let you know.

Take a look!

<https://www.howardyoungfoundation.org/howard-young-foundation-tick-borne-illness-center-of-excellence.pdf>



Have you heard about **MyLymeData**?

Every Lyme patient should consider this as it's a way each individual can make a difference. Please check it out.

<https://www.mylymedata.org>



New source of **financial aid** for Lyme patients.

Lyme Light Foundation

Who is eligible?

Anyone diagnosed with Lyme disease through age 25 and can demonstrate a qualified financial need.

Applicant must be an active patient of a US-based Lyme-literate MD, ND, DO, PA-C, or NP. NDs must have graduated from a CNME accredited institution. All practitioners must have prescribing rights in their state of practice.

Must be a USA resident.

<https://lymelightfoundation.org/grants/>



Sometimes, we are unable to see
the whole picture,
yet we cling to the hope that
there is something bigger yet to
come.

A new day which brings a healing
of not just the body, yet also of
the soul.

Be strong dear ones. You got
this and you are not alone!

**TICKS BITE
AND
WE FIGHT!**

WE HAVE PRETREATED SOCKS

Community Outreach

The Wisconsin Lyme Network has been able to partner with a company that manufactures factory bonded repellent socks.

We have women/girls socks that are more colorful and look similar to ski socks. We also have men/boys crew socks.

If you are interested, please go to our website to order them directly from our web store. If you have any questions, email us at info@wisconsinlymenetwork.org.

Remember: Prevention is key to protecting yourself.



Wisconsin Lyme Network
wisconsinlymenetwork.org